

Change gears. Accelerate. Drive value

GCC Framework

Measurement Measure the work and identify what work is measurable, repeatable, transactional, and predictable (MRTP) in nature.

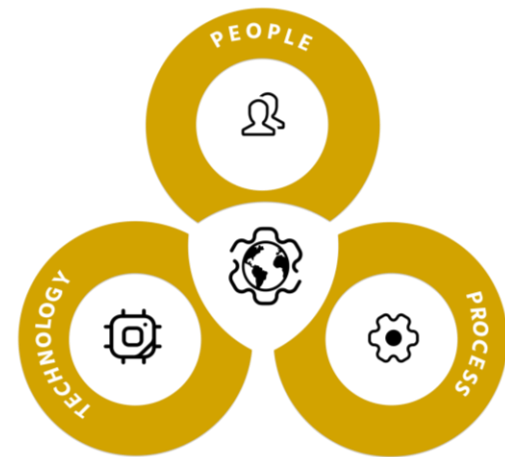
Automation identification Automate all MRTP work using RPA and identify other work that can be automated using AI and/or Gen AI.

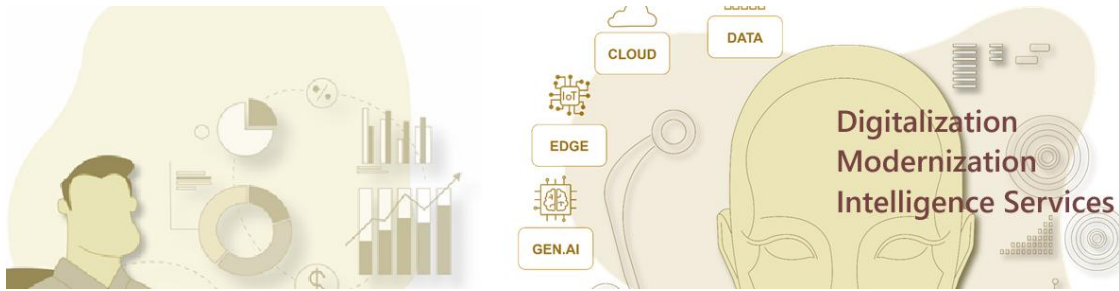
Re-engineering Perform As-Is and To-Be process mapping using benchmarks and best practices. This includes identifying the right size, right location, right pyramid, as well as end-to-end process engineering.

Data, analytics, and AI Organize data so that you can use data, analytics, and AI to generate insights.

Intelligent work allocation Identify gaps in utilization and cross train workforce to effectively deploy across organization

RBHU GCC
Smart. Scalable. Global





RBHU GCC
Smart. Scalable. Global

We believe the most successful companies in the world in the next decade will use tech, data, and AI to reinvent every part of their enterprise. The rise of GCCs as reinvention engines marks a pivotal shift in how companies can harness talent and technology for transformative growth. By centralizing talent and resources, these centers enable companies to swiftly adapt to market changes, drive continuous innovation, and maintain competitive advantages.

India's GCC ecosystem continues to flourish thanks to a mix of talent availability, supportive policies, and robust infrastructure. GIFT City goes beyond these fundamentals, offering an internationally benchmarked environment tailor-made for advanced business and tech operations.

For senior business leaders looking to propel their companies into a future dominated by AI and advanced technologies, investing in GCCs offers a clear path to scaling transformation and unlocking unprecedented business value. We (RBHU) will be happy to help setup-operate GCC with the right people, doing the right work in the right location keeping your costs low and outcomes high.